

Quick Start XLe Source Expansion Kit

Caution: Before touching the supplied audio card, ground yourself by touching an unpainted metal surface. While working on your computer you should periodically touch an unpainted metal surface on the computer chassis to dissipate any static electricity that could potentially damage the computer and/or the audio card.

Hardware Installation

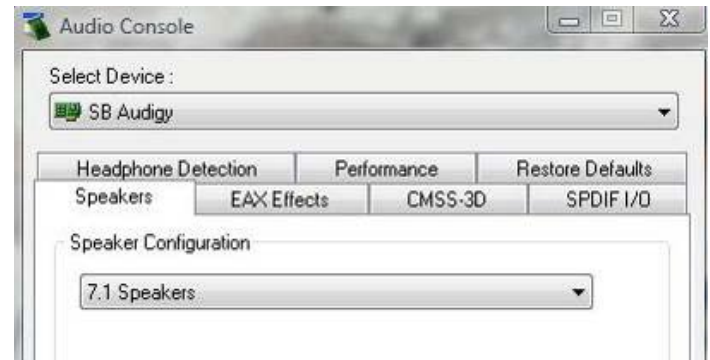
1. Read your specific computer's owner's manual for instructions on how to install a PCI card.
2. Turn-off and unplug the power from your computer.
3. Ground yourself and then take the audio card out from its container.
4. Insert the sound card into any open PCI slot in the computer and close the computer.
5. **PLEASE NOTE:** The included sound card uses a special cable for the 2nd, 3rd and 4th stereo outputs. Please use the included audio cables to connect the outputs of the audio card to the source inputs of your XLe PCI-e card. There are three different cable types; **TYPE 1** is a cable with a 3.5mm plug at both ends, **TYPE 2** is the special cable with a 3.5mm plug at one end and three RCA male connectors at the other end (2 per kit) and **TYPE 3** is a cable with a 3.5mm plug at one end and two RCA female connectors at the other end (3 per kit).
 - a. Plug the one end of the **TYPE 1** cable into the Green Jack on the audio card. Plug the other end into the L1 input of the XLe card that is mounted in the PC. When you run the CasaTunes setup software later, this audio card signal will be called "Speakers 1&2 (Front Left/Right)" in Source6. Don't worry; we will cover this again during software installation.
 - b. Plug the 3.5mm plug on one of the **TYPE 2** cables into the Black Jack of the audio card. Plug two of the RCA connectors at the other end into the female RCA connectors of one of the **TYPE 3** cables. The Yellow connector on the **TYPE 2** cable goes to the red connector of the **TYPE 3** cable and the White connector goes to the White connector. You will use the **TYPE 2** cable's Red connector later. Now plug the 3.5mm end of the **TYPE 3** cable into the L2 input of the XLe card. For the CasaTunes Setup software, this audio card signal will be called "Speakers 3&4 (Rear Surrounds)" in Source7.
 - c. Plug the 3.5mm plug from the remaining **TYPE 2** cable into the Orange Jack. Plug two of the RCA connectors at the other end into the female connectors of the second **TYPE 3** cable. Yellow goes to Red and White goes to White. You will use the remaining **TYPE 2** Red connector in the next step. Plug the **TYPE 3** cable's 3.5mm connector into the L3 input of the XLe card. For the CasaTunes Setup software, this audio signal will be called "Speakers 5&6 (Center/LFE)" in Source8.
 - d. Now plug the two remaining Red RCA connectors from the two **TYPE 2** cables into the last **TYPE 3** cable. Plug the Red RCA connector coming from the Black Jack in step b, above, into the Red connector of the **TYPE 3** cable and the Red RCA connector coming from the Orange Jack in step c, above, into the White connector. Plug the 3.5mm connector on the other end of this **TYPE 3** cable into the L4 input of the XLe card. For the CasaTunes Setup software, this audio card output will be called "Speakers 7 & 8 (Side Surrounds)" in Source9.
6. Plug the power cord back into the computer. You are done with the hardware installation of the audio card.

Software Installation

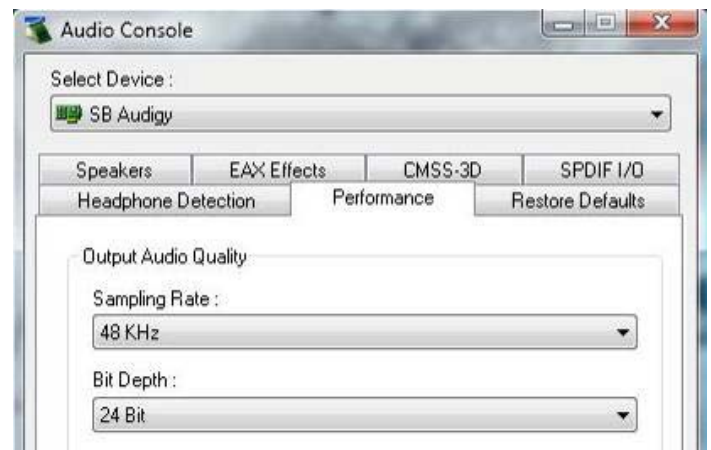
1. Plug-in and turn-on your computer.
2. Follow the instructions included with your XLe for installation of the XLe and CasaTunes. Complete the installation of the XLe and CasaTunes setup before continuing here, if you have not already done this.
2. If the “welcome found new hardware wizard” for the audio card pops up, IGNORE IT.
3. Insert the CasaTunes Source Expansion Kit Installation CD into your computer.
4. The audio card driver installation program should start automatically. It may seem like nothing is happening for a minute or two, please be patient. It will say that it is a Vista driver program, but it has drivers for all operating systems and will work with XP, if you are using XP.
5. Follow the on-screen instructions of the installation program and click on “Install anyway” if you have a pop-up warning that you are installing an unsigned driver. When you are done running the audio card installation program, you will need to restart your computer.
6. **IMPORTANT: If you are using the XP operation system, skip to instruction 7. If you are using the Vista operating system, do the following steps and then skip to instruction 8.**

a. Open the Start menu, select “All Applications”, open the Creative folder and click to open “Audio Console”.

b. Click on the “Speaker” tab and set the speaker configuration to “7.1 Speakers”:



c. Click on the “Performance” tab and set Bit Depth to “24 Bit”. If Sampling Rate is not already set to 48kHz change it:



d. Close the Audio Console.

e. Right-click the volume control (looks like a speaker, next to the clock in the photo, right) in the lower right of the desktop and select “playback devices”:

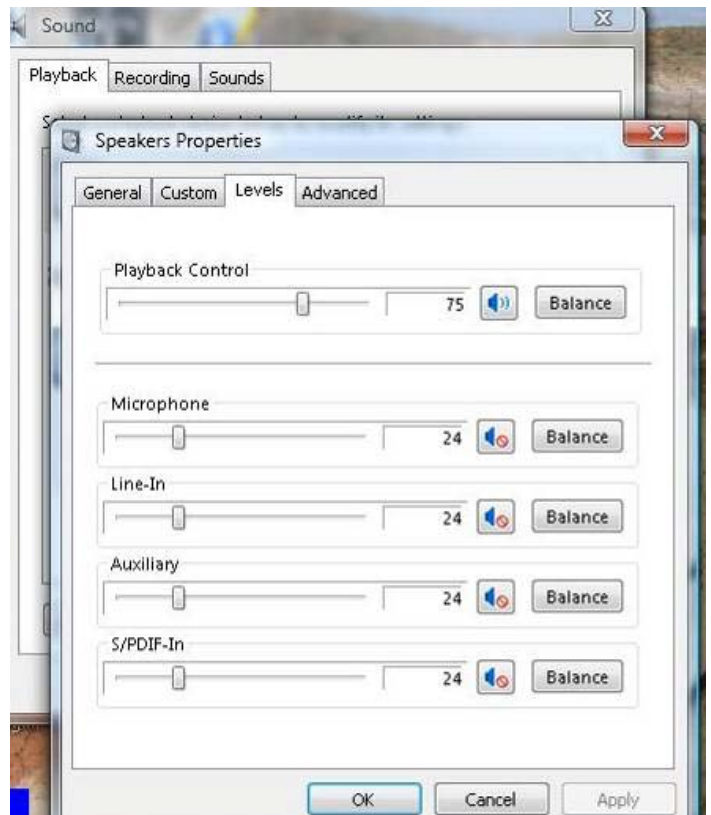


If you cannot find the volume control, you can open the Start menu, click on Control Panel, Click on Hardware and Sound in the control panel, and then click on “Manage audio devices”.

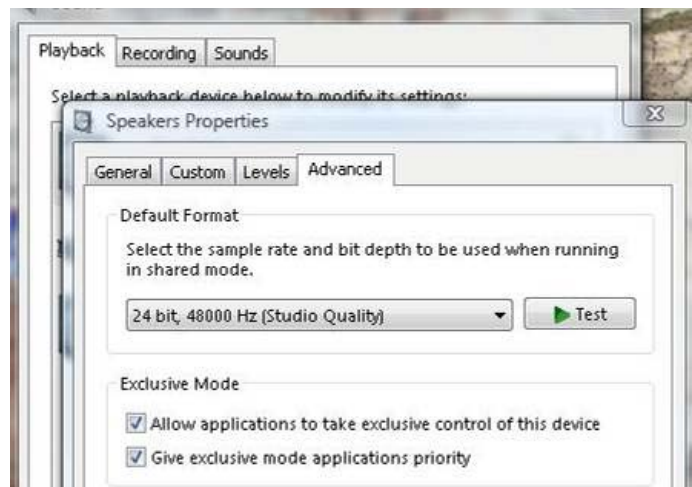
f. You should see the Sound window with the Playback tab selected. Click on the on-board speaker device (the one that does NOT say “Speakers SB Audigy” or “CasaTunes HD Audio”) to highlight it and then click on the “Set Default” button to set the on-board device as the default device. In the example image, the on-board device is the device that says “Speakers SoundMAX Integrated Digital HD Audio”. You do this so that the new audio card and the CasaTunes XLe are not the default audio device. This will keep computer sounds from going throughout the house. Also, you can continue to use the on-board audio for other, non CasaTunes functions. Your window should look something like this with an additional line showing the CasaTunes device (this example has a SoundMAX on-board audio chip. Note that the SoundMAX device has the green check mark next to it, indicating that it is the Default Playback device. CasaTunes will use the SB Audigy device even though it is not the default):



g. Double click on the “Speakers SB Audigy” device (or right-click on it and select Properties) to open the device’s properties window. Click on the “Levels” tab and set the “Playback Control” to 75. Click on “Apply”. The other levels are not critical and can be left as they are, as they are not used by CasaTunes.



h. Click on the “Advanced” tab, set the “Default Format” to “24 bit, 48000 Hz (Studio Quality)”. Make sure the two checkboxes in the “Exclusive Mode” section are checked. Click on “Apply”:



i. Skip to instruction 8.

7. If you are using Vista, skip this instruction. If you are using XP, do the following:

a. Go to the Start Menu. In All Programs, click on Creative and run the Creative Speaker Settings program. Select 7.1 speakers:



b. Close the Speakers Settings program and go the Start Menu. In All Programs, click on Creative and run the Creative Device Control program. Select 48 kHz and 24 bits and click on “Apply”:



c. Go the Start Menu and open the Control Panel. Open “Sound and Audio Devices”, click on the “Audio” tab, and select the SB Live! 24-bit as the Default device in the “Sound Playback” section:

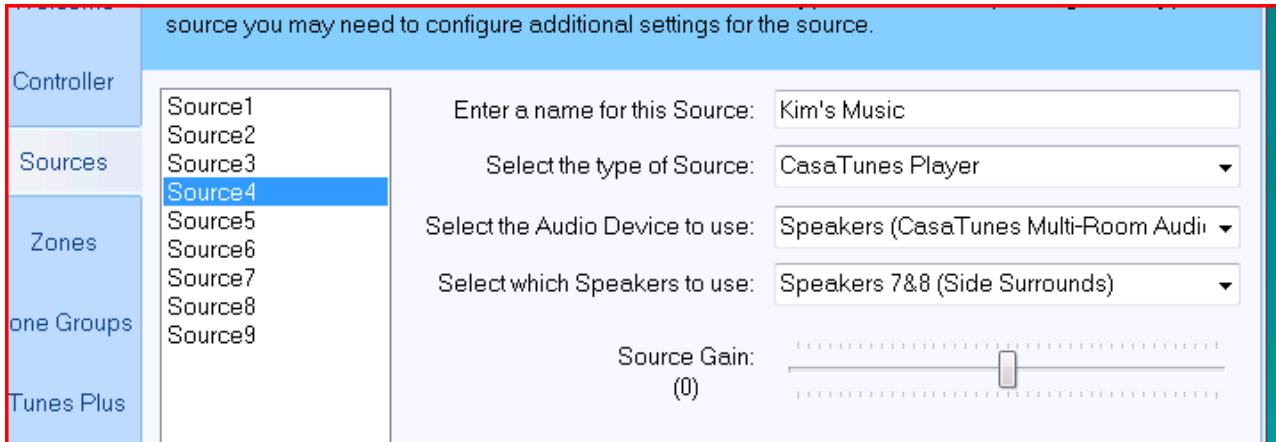


- d. Now click on the Volume tab and move the Playback level to the 2nd line from the right. Click on “Apply”.
- e. Click back on the Audio tab and change the Default device for Sound Playback to the on-board audio chip. Click on “Apply”. This will prevent computer sounds, such as mouse clicks, from going through the whole house.

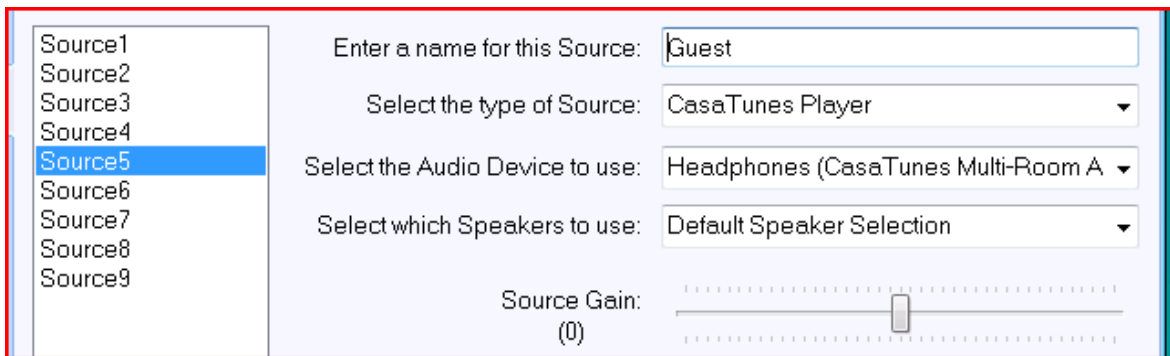
8. Find CasaTunes Setup on the desktop or in the Start Menu and run it.

9. In CasaTunes Setup, click on the Controller tab and verify that the type of system selected is the CasaTunes XLe.

10. In CasaTunes Setup, click on the Source tab. Verify that the first four Sources are already set up similar to this (you can change the name for the Source to anything you prefer):



, with the first Source saying Speakers 1&2, the second Source saying Speakers 3&4, the third Source saying Speakers 5&6 and the fourth saying Speakers 7&8 in the “Select which Speakers to use:” location. For Vista, Source5 should be set up like this:



If you are using Windows XP, Source5 should show “None” for the type of Source (XP does not allow us to use Source5).

11. Now, for Source6, choose “CasaTunes Player” in “Select the type of Source:”. If you are using Vista, choose “Speakers (SB Audigy)” in “Select the Audio Device to use:”. The choice will be “Speakers (SB Live!)” if you are using XP. Finally, in “Select which Speakers to use:”, select “Speakers 1&2 (Front Right/Left)”. Set the “Source Gain” setting to “10”. Continue with Sources 7, 8, and 9 using “Speakers 3&4 (Rear Surrounds)” for Source7, “Speakers 5&6 (Center/LFE)” for Source8 and “Speakers 7&8 (Side Surrounds)” for Source9.

12. Restart your PC.

You can now start the User Interface by double clicking on the CasaTunes shortcut on the Desktop or in the Start Menu. For information on how to use CasaTunes, see your CasaTunes User Guide.