

## CasaTunes Setup (Cont)

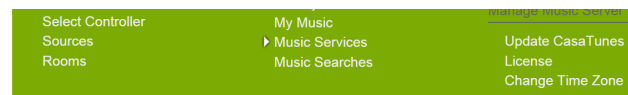
For any source input that CasaTunes supplies a music stream, pick CasaTunes Media Player as the Source type and set the Player Settings to match the audio jack you are using. In this example, on a CT-4S, if we connect the first CasaTunes stream to the first Leviton Source, click on Player 1 and set the settings as shown here. For the CT-4S, all of the streams use "Speakers (Realtek High Definition Audio)". For the CT-8S, the first four streams use "Speakers (Asus Xonar DSX Audio Device)" and the last four use "Speakers (Realtek High Definition Audio)". You can assign any CasaTunes Media Player to any of the Leviton Source inputs.

For other source inputs, pick the Source type. If we don't list the device, pick "Unknown". Hide sources that are not used.

### CasaTunes Player Settings

Select audio device for source:

Select speakers for source:



Enable all of the music services you are interested in.

Some music services require setting up SqueezeBox. Follow the directions in CasaSetup.

Some music services require paid accounts, as noted in CasaSetup.

Now, name all of your sources and rooms and set your Time Zone and Update settings. Check the "Hide" box for any Sources or Rooms not used. Click on Advanced Settings and use the Project Information page to create a backup of the project.

## Control

Use our control apps.



OR

Go to <http://CasaServer/CasaTunes> on any PC, or <http://CasaServer.local/CasaTunes> on any Mac connected to the network

## Need Help?

Check out the videos at <http://www.YouTube.com/CasaTunes>

Check out our Tech Notes at <http://www.CasaTunes.com/guides>

For live help, email us at [support@CasaTunes.com](mailto:support@CasaTunes.com) or phone us at 888-855-2272

# CasaTunes®

## Quick Start Guide: CT-4S or CT-8S for Leviton



**Use this guide only when using CasaTunes to stream to and control Leviton Hi-Fi2 audio distribution systems.**

### Included Items



Network Cable Qty 1



3.5mm to 3.5mm Audio Cables  
CT-4+ Qty 4  
CT-8+ Qty 8



Serial Cable Qty 1  
**Not used with Leviton**



3.5mm to RCA Audio Cables  
**Not used with Leviton**



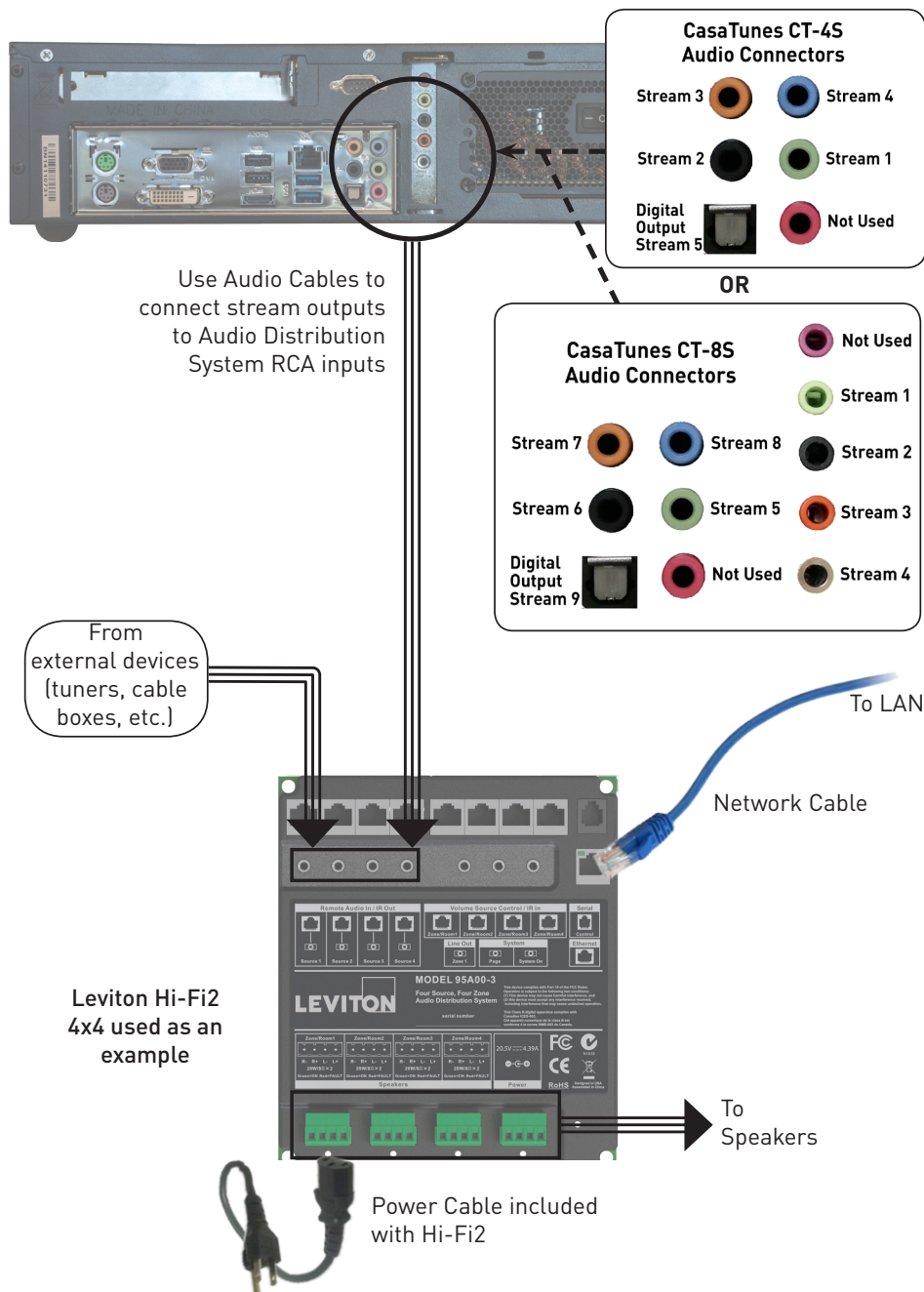
Power Cable Qty 1



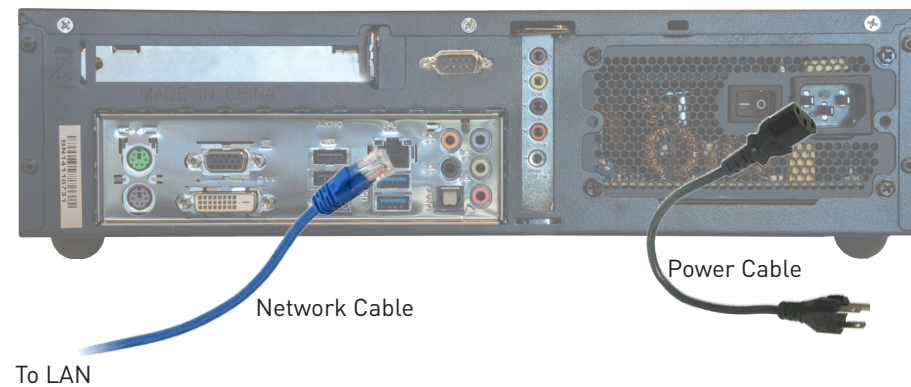
Trigger Cable Qty 1. **Not used with Leviton**

## Connect CasaTunes to Leviton Hi-Fi2

Normally, the Digital Output is not used.



## Connect to LAN and Power



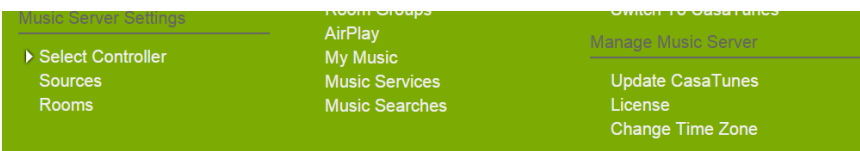
## CasaTunes Setup

Turn on the CasaTunes and Leviton systems at this time.

Open any browser on the LAN and go to CasaSetup:

PC: <http://CasaServer/CasaSetup>  
Mac: <http://CasaServer.local/CasaSetup>

Use CasaSetup to select the Leviton Audio Distribution system. Enter the IP address of the Hi-Fi2 system. If you select Serial, you will need to obtain a special serial cable from Leviton.



### Controller Settings

Select Controller Type:

Use Serial (RS-232) or IP?

### IP Settings

IP Address:

TCP Port:

After clicking on Save, the Sources and Rooms refer to the source inputs and zone or room outputs of the Distribution system you are controlling. (continued on back page).