

CasaTunes®  
music by the roomful



# Installation Guide for URC Streaming Module

**Important!** The Streamer Module is used only when you only need simple CasaTunes streams (which use our Servers in **Multi-stream Player Mode**) to feed music streams to AVRs or URC's DMS.

If you are using our CasaTunes Servers as complete Systems using the built in matrix switch (we call this **System Mode**) OR our CasaTunes Servers that are controlling third party matrix switches (we call this **System Controller Mode**) you will need our System Module. The System Module, including the System Module Quick Start guide, is found on our site at [www.CasaTunes.com/downloads](http://www.CasaTunes.com/downloads).

## Contents

Features of the CasaTunes URC Streaming module .....	4
Features .....	4
Parameters available during module setup.....	4
Device Events (for triggering dealer created macros) (set up by dealer in Step 12 of Accelerator).....	4
Two Way commands (set up by dealer in Step 12 of Accelerator) .....	4
Setting up CasaTunes in Streamer Mode, step by step. ....	5
Use URC Accelerator to build your system, step by step.....	6
Using More Than One Stream in a Zone (DMS-1200 or multi-zone AVR) .....	10
Special Considerations.....	12
What is the “POWER ON” one-way command? .....	12
Where did the “POWER OFF” one-way command go? .....	12
Description of User Interface.....	14
Selecting Music.....	15
Now Playing Screen.....	18
Search Music .....	18
Editing Playing Queue.....	19
Creating a CasaTunes Playlist.....	20

## Features of the CasaTunes URC Streaming module

### Features

- Display cover art and metadata for currently playing music in a selected Stream
- Browse for music and play selections or add them to currently playing queue
- Search for artist, album or song in current music service or across all services.
- Create new stations in services that allow it, like Pandora.
- Save and name a currently playing queue as a CasaTunes Playlist
- Delete CasaTunes Playlists
- Edit the currently playing queue, removing items from it.
- Send (multiple) streams of music from iOS devices to CasaTunes Streams
- User Interfaces for TKP-7000, TRC-1080, iOS and Android phone and tablet apps, as well as the new TKP-5500 and TRC-820
- One way commands for older panels and controllers.

### Parameters available during module setup

- Optionally enable transport hard button (play, pause, etc.) intercepts. This might be useful if you don't want to use one-way commands in two-way remotes, like the TRC-1080. Defaults to "no".
- Optionally disable info and menu hard button intercepts. Defaults to yes.

### Device Events (for triggering dealer created macros) (set up by dealer in Step 12 of Accelerator)

- When a specified Music Service is selected or deselected or any Music Service is changed in a specified Stream

### Two Way commands (set up by dealer in Step 12 of Accelerator)

- Play a specified CasaTunes Playlist
- Activate transport controls (Play/pause, etc.) in a specified source (Or you can use the one-way commands)

## Setting up CasaTunes in Streamer Mode, step by step.

1. Install your CasaTunes Streamer using the supplied installation instructions. If you have one of our "Systems", like our CT-4+, it can also work as a Streamer by following these instructions.
2. After powering up the Streamer, open a browser on any computer on the same network and go to <http://CasaServer/CasaSetup>.
3. In CasaSetup, click on the "Advanced Settings" button on the top right bar and check the box next to "Configure music server as a multi-stream player?"

### Controller Settings

Select Controller Type:

Cas

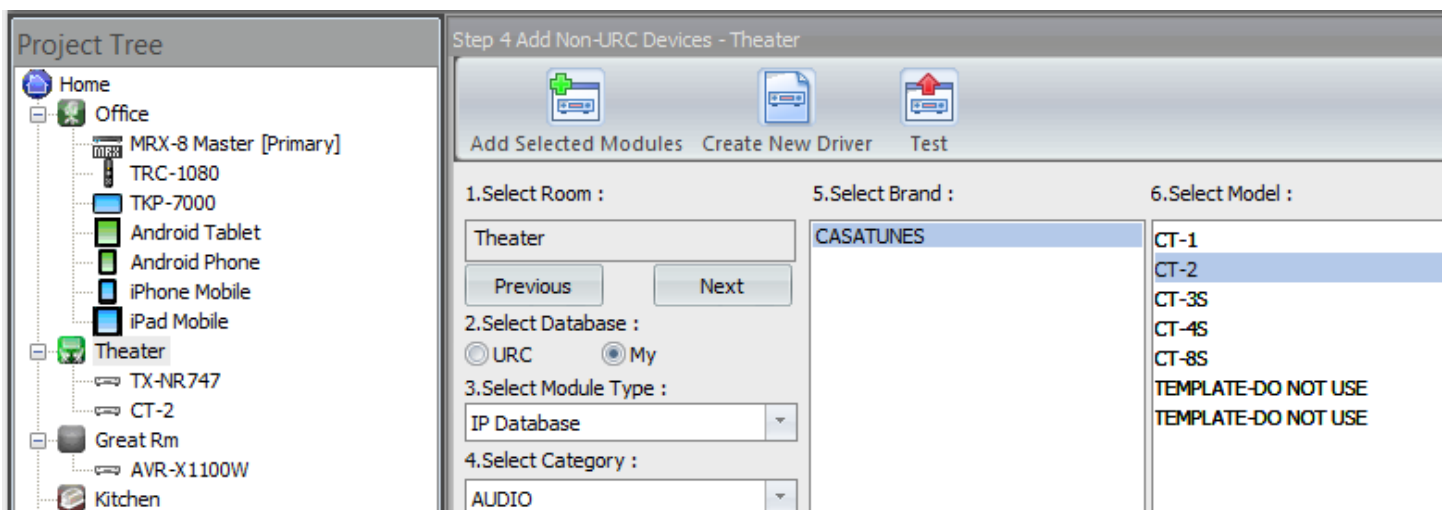
☐ Are you using a CasaTunes CT-3, CT-3S or CTMS-3 music server

☒ Configure music server as a multi-stream player?

4. All other settings should be correct from the factory. After you are done, click on Save.
5. Now go to "Sources" and rename all of your "Built-in Sources", clicking on "Save" regularly. These Sources are the Streams, outputted on the back of the system, which you will be using with URC. Each one is a separate Stream. Name them something that will make sense to your customers. The outputs of the Streams will connect to the inputs of AV Receivers or matrix switches (such as the DMS). "Hide" any Streams that you will not be using.

## Use URC Accelerator to build your system, step by step

1. Open URC's Accelerator and in the File tab, select "Import TCM Files" and import the "CasaTunesStreamer.tcm" file.
2. Close Accelerator and restart it,
3. Create your new project and when you get to "Program Step 4", you will find the CasaTunes Module by clicking on "My", selecting "IP Database" in Module Type and "Audio" in Category. Select CasaTunes for Brand and pick the model that matches your CasaTunes product (if you using a CT-4+, pick CT-4S. If you are using a CT-8+, pick CT-8S). Finally use "Add Selected Modules" to add the correct module for the type of streamer you have, to the main room. The following example uses the CT-2. We also added an Onkyo home theater receiver in the Theater room and a Denon AVR-X1100W next door in the Great Rm room:



4. Set up the IR and/or IP control for the AV Receivers following your normal project creation steps.
5. In Program Step 6, put in the IP address of the CasaTunes Streamer and in the Port column, always use port 8735, unless told otherwise by our support staff:

LAN & Wifi URC Device Non URC Device			
Room	Device	IP Address	Port
Theater	CT-2	10.0.0.2	8735

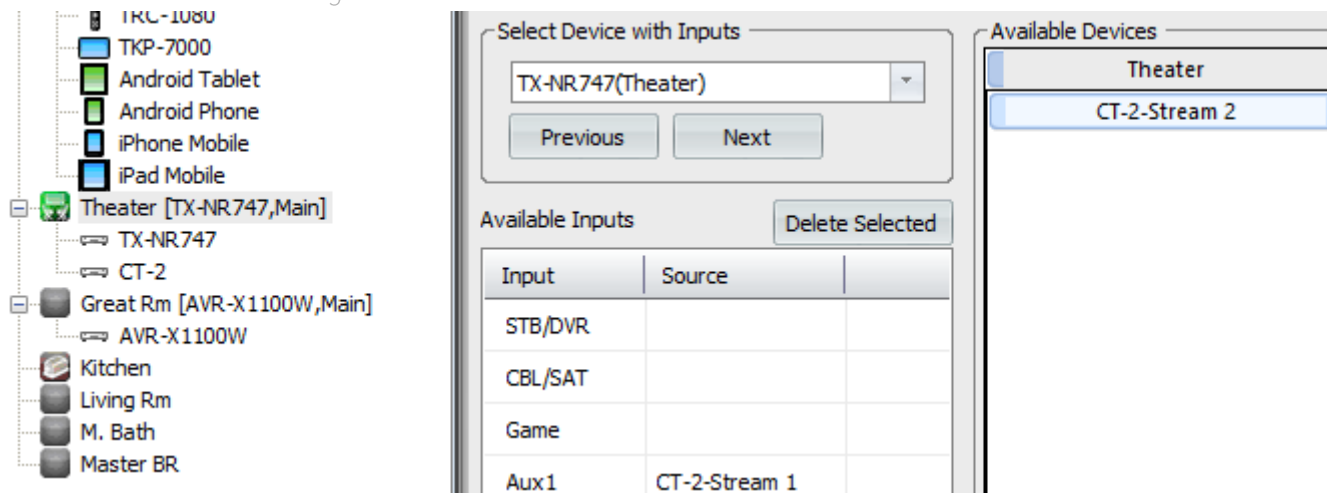
6. In Accelerator Step 7, you will connect the two streams of the CT-2 to the two AV Receivers. For this example, we are showing the connection of one stream to the AUX input (or any available input) of one receiver and the other stream to the other receiver. If you want to give your customers the ability to have more of a "multi-room audio" type setup, using a DMS-1200 or multiple inputs to the multi zone receivers, see the more complex example "[Using More Than One Stream in a Zone](#)".
  - a. Connect the first stream to the Theater's AVR AUX1 input:

Need Help? Have Feedback?

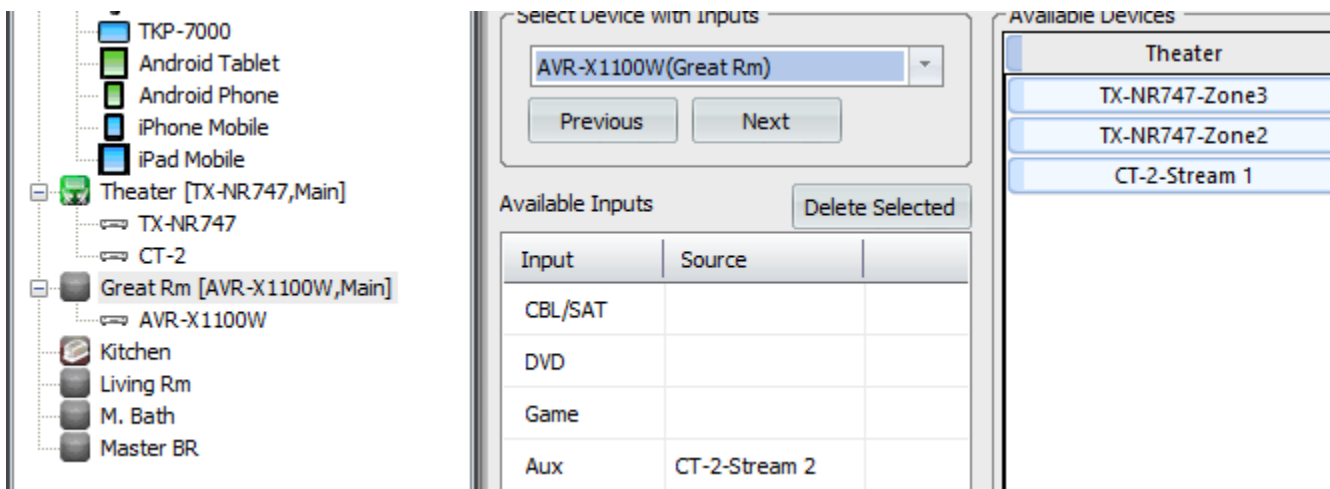
Please do not hesitate to contact us.

Call 888.855.2272 or email [Support@CasaTunes.com](mailto:Support@CasaTunes.com)

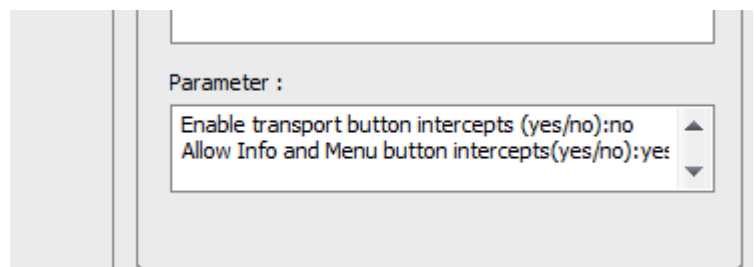
Copyright CasaTools, LLC 2015, 2016  
V2.02



b. Connect the second stream to the Great Rm's AVR AUX input:



7. Continue with your normal project steps. In Accelerator Step 10, after accelerating, you may wish to rename the "Streams" buttons in the two rooms to the actual names you used in CasaSetup, such as Stream 1 in the Theater and Stream 2 in the Great Rm, or something that makes sense to your customer. This is optional. You can remove CasaTunes buttons from the Settings menu, as they are not used.
8. In Accelerator Step 11, for each room, by default the module is set up to not allow intercepting transport hard buttons and to allow intercepting Info and Menu hard buttons to show CasaTunes information. The Info button intercept allows the customer to see some information about the music playing. You change these by changing the default to the right of the colons.



Need Help? Have Feedback?

Please do not hesitate to contact us.

Call 888.855.2272 or email [Support@CasaTunes.com](mailto:Support@CasaTunes.com)

Copyright CasaTools, LLC 2015, 2016  
V2.02

9. In Accelerator Step 12, you can go to Edit Automation Macros, select Device Events and create your macros. If you wish to use these events, make sure you put in the exact same source (stream) name as in CasaSetup and the exact Music Service name (contact us for help finding the Music Service names at [support@CasaTunes.com](mailto:support@CasaTunes.com)):

**Edit Automated Settings**

Name :  
Service changed to Pandora

Available Devices :  
CT-2 [Theater]

Available Event :  
Music Service Event

**Parameters**

Changed Music Service  
Switched To

Music Service Name {Optional}  
Pandora

For Player(Stream) Name  
Stream 1

Prev Next

OK Cancel



10. In Accelerator Step 12, you can also use a 2-Way Module Command to control any Streams's music transport control. Since these are also in the 1-way commands, you may not need them. "Source" means the same as "Stream". If you use these commands, use the exact same name as you set up in CasaSetup:

**2-Way Module Command**

Name :  
Hit Play in Kim's Music

Available Devices :  
CT-2 [Theater]

Available Command :  
Transport Control in a Source/Stream

**Parameters**

Select Action  
play

Source/Stream Name  
Stream 1

Prev Next

**Result**

☐ Save the result : string

Variable :  Create Variable

OK Cancel

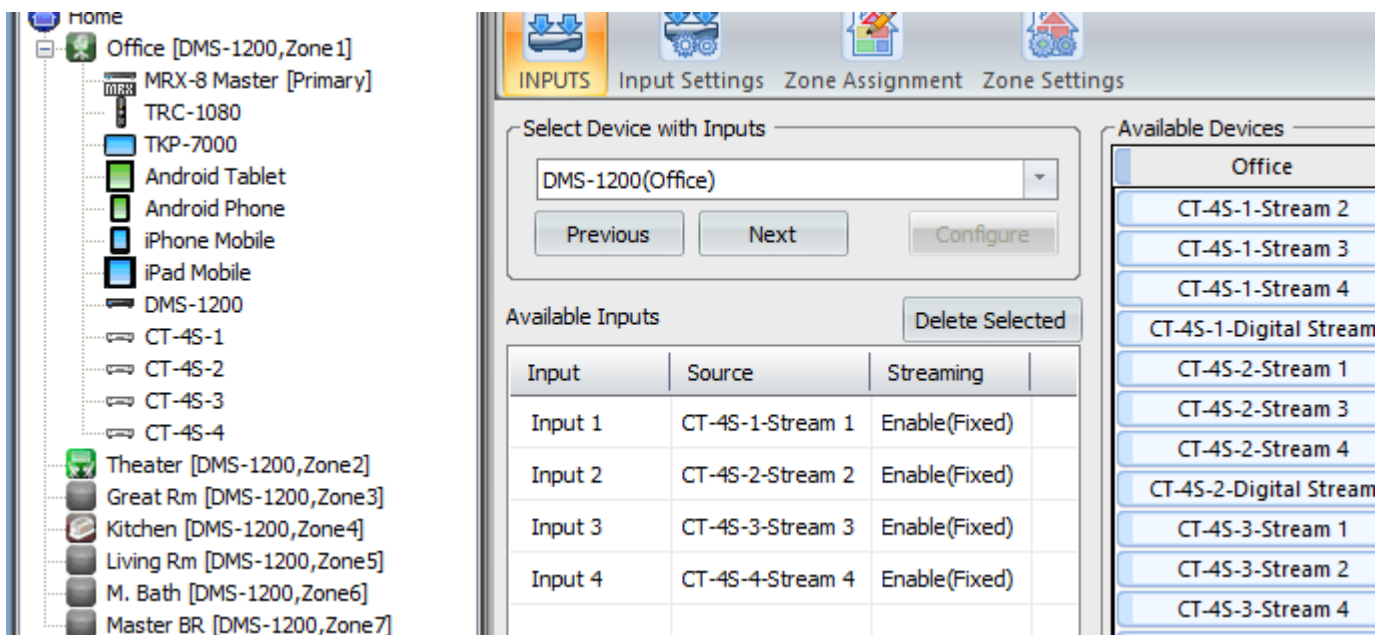
11. Finish the remaining Program steps in Accelerator and download to your MRX unit and any remotes.

## Using More Than One Stream in a Zone (DMS-1200 or multi-zone AVR)

In many cases, you will be using our multi-stream players to feed several streams to a single, multi-source device, like the DMS-1200 audio distribution system or to more than one source input in AV Receivers. In order for Accelerator to show buttons for each stream in the rooms, you will need to place multiple instances of the driver in the project, even though you are only using one physical CT-4S. Here is a brief example, shown using a DMS-1200.

1. In our example project, we have a CasaTunes CT-4S, which has four analog outputs and one digital output, and a DMS-1200. In Accelerator Step 3 install the DMS-1200 and in Step 4, install four copies of the CT-4S driver, one for each of the DMS-1200 inputs we will be using. (The fifth, Digital, output could feed an AV Receiver or other device with that has a Digital Input.)
2. Rename the CT-4S devices so it will be easy to know which is which.
3. We will set it up by connecting the CT-4S outputs to the DMS-1200 inputs in Accelerator Step 8. (If you were using our Streamers to feed AV Receivers you would make the connections using Step 7.)
4. In Accelerator Step 8,
  - a. **INPUTS:** Assign the appropriate streams to the DMS-1200 inputs. Make sure you use a different CT-4S instance for each input.
  - b. **Input Settings:** CasaTunes Streamers' output drive are set on the low side at the factory to make sure there is no distortion. You can set the "Input Level Settings" to Level7. If you find that there is distortion during loud music, change the setting to a lower Level number, like Level5.
  - c. **Zone Assignment:** Assign the room outputs as appropriate.

When done you will have something like this:



Need Help? Have Feedback?

Please do not hesitate to contact us.

Call 888.855.2272 or email [Support@CasaTunes.com](mailto:Support@CasaTunes.com)

Copyright CasaTools, LLC 2015, 2016  
V2.02

12. Continue with your project and in Accelerator Step 10, after accelerating, in each room rename the four streams to names that makes sense to your customer, such as Stream 1, Stream 2, etc. or maybe your customer's family names, such as "Alison's Music", "Kim's Music", etc. You can remove any CasaTunes buttons that show up in the Settings menu, as they are not used.



5. Finish your project, referring to our directions in our [main example](#) as necessary.

## Special Considerations

### What is the “POWER ON” one-way command?

CasaTunes streamers are actually never powered on or off. The streams draw so little power that they are left running all of the time. The POWER ON command is actually a “Play” transport command and makes sure that the music starts playing when the stream is selected in a room.

### Where did the “POWER OFF” one-way command go?

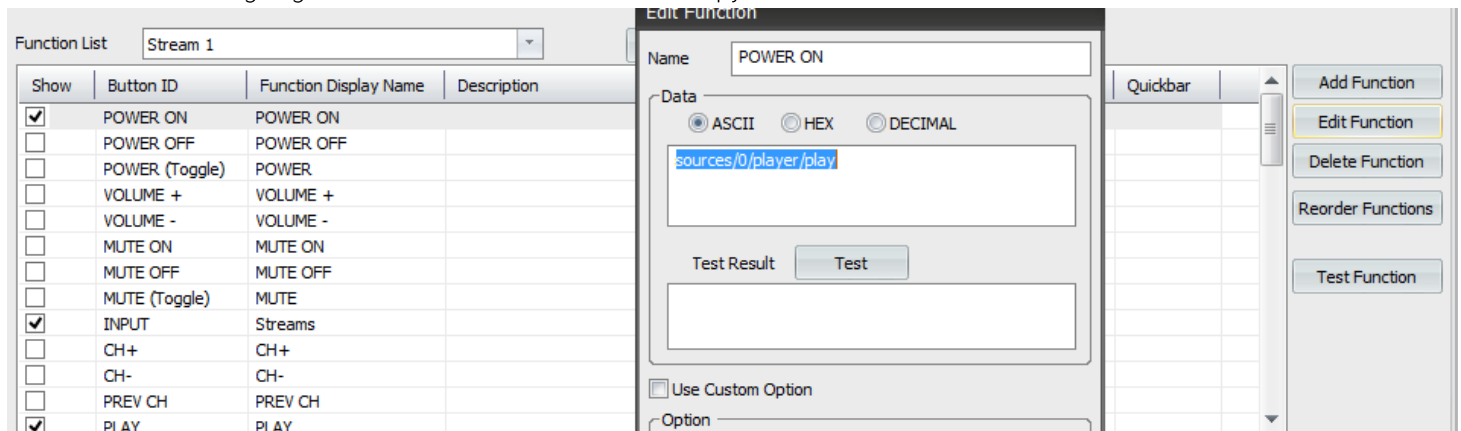
Because of some limitations in Accelerator, we removed the POWER OFF. Since POWER OFF was really a “Pause” transport command, music is not paused when the rooms using the stream are turned off. This is not an issue with most internet streams. For music that can be paused, if your customer wishes to pause a song that is playing when a room is turned off, they should click on the Pause button before clicking on the Power button.

It is possible put the POWER OFF (pause) command back in the driver by following these steps:

1. In accelerator, click on the “My Database” tab and then click on “Edit Driver”.



2. Open the correct driver. In our example using the CT-4S, click on CasaTunesCT-4S.csd.
3. When the Device Driver Edit window comes up, click on “Edit Functions”.
4. Highlight the POWER ON entry and click on Edit Function. This should bring up the POWER ON edit window. Highlight the Data and use Ctrl-C to copy it:



5. Close the edit window by clicking on Cancel, highlight the POWER OFF command and click on Edit Function.

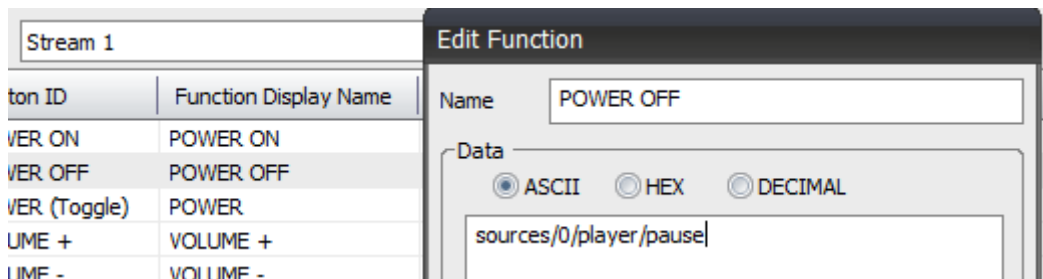
Need Help? Have Feedback?

Please do not hesitate to contact us.

Call 888.855.2272 or email [Support@CasaTunes.com](mailto:Support@CasaTunes.com)

Copyright CasaTools, LLC 2015, 2016  
V2.02

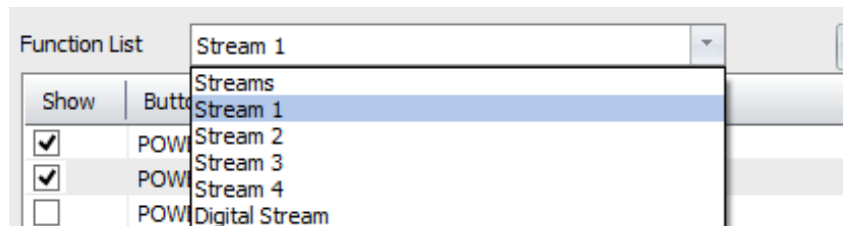
- Paste the POWER ON data into the POWER OFF Edit Function window and change “play” to “pause”, like this:



- Save the edit by clicking on “OK”.
- Check the “Show” box at the left end of the POWER OFF command line. You should end up with this:

Function List <span>Stream 1</span> <span>Special Options</span>				
Show	Button ID	Function Display Name	Description	Function Data
<input checked="" type="checkbox"/>	POWER ON	POWER ON		sources/0/player/play
<input checked="" type="checkbox"/>	POWER OFF	POWER OFF		sources/0/player/pause
<input type="checkbox"/>	POWER OFF	POWER OFF		

- Repeat steps 4-7 for each Stream by using the “Function List” to pick each stream. Do not modify “Streams”. Therefore, in the case of the CT-4S, you would be adding the POWER OFF commands to Stream 1, Stream 2, Stream 3, Stream 4 and Digital Stream.



- Click on Save to save the modified driver (HINT: the fast way to go back to the original driver is to import the .tcm file again).
- If you already added the CT-4S in the project in Accelerator Step 4, remove it and add it in again. Don’t forget to reconnect it in the other steps.

## Description of User Interface

The following illustrates using an iPad with the URC Mobile app to control your CasaTunes streams. When you first select a CasaTunes stream it will look like the following. At this point the stream is not playing anything and the Queue is empty. This stream was named "All Music" in CasaSetup:



Click on the Select Music (Select with a musical note next to it) button to select music.

Need Help? Have Feedback?

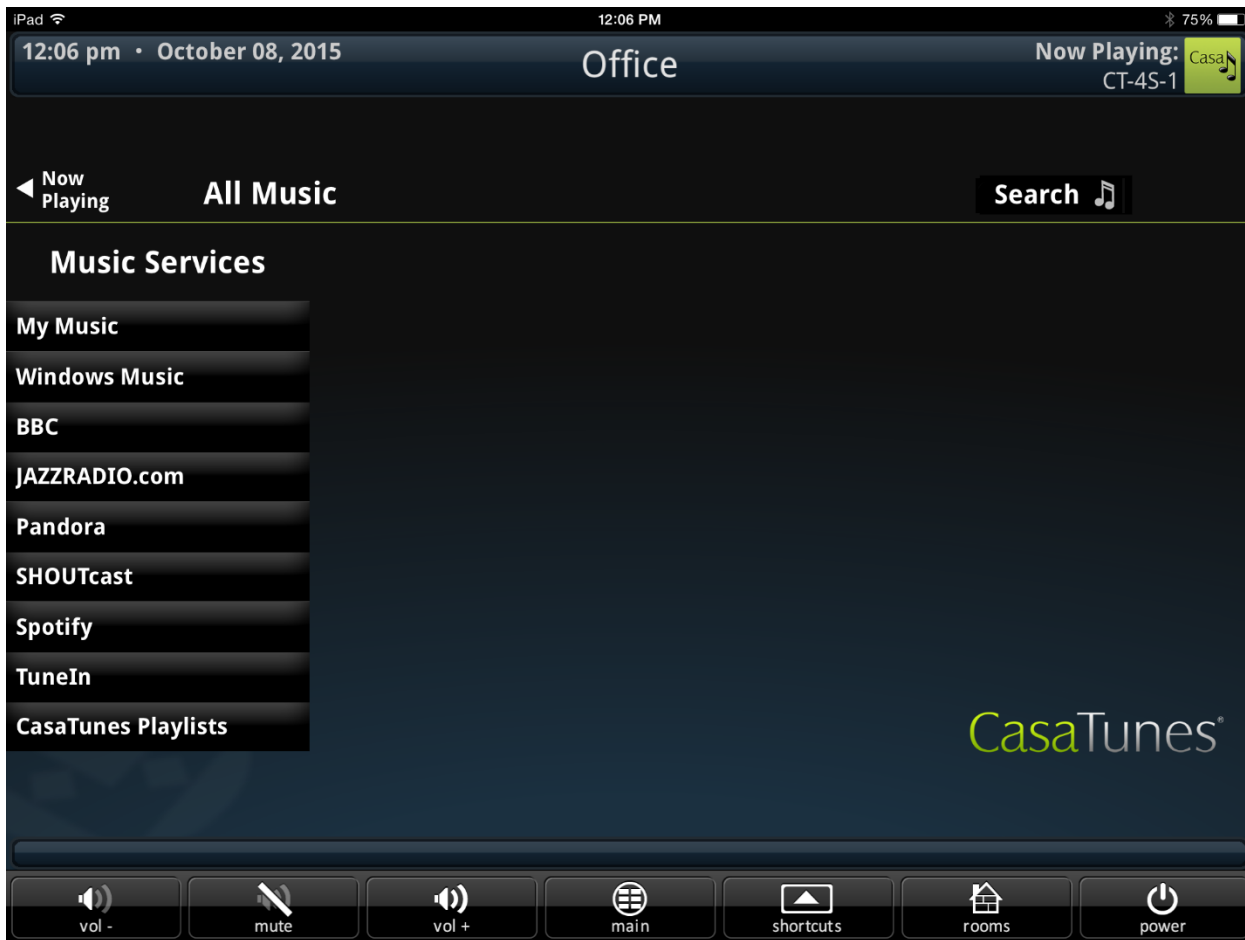
Please do not hesitate to contact us.

Call 888.855.2272 or email [Support@CasaTunes.com](mailto:Support@CasaTunes.com)

Copyright CasaTools, LLC 2015, 2016  
V2.02

## Selecting Music

The Select Music button will take you to the music browsing page where you can browse through your music services. Your browse page may look different, depending on which music services you have available.



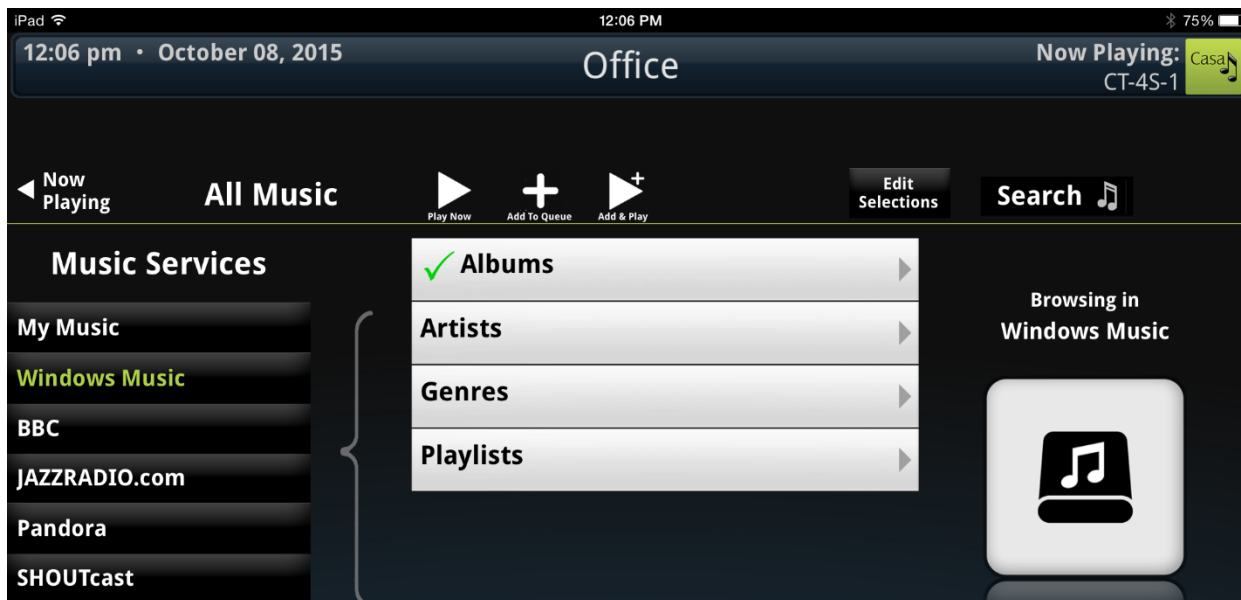
Need Help? Have Feedback?

Please do not hesitate to contact us.

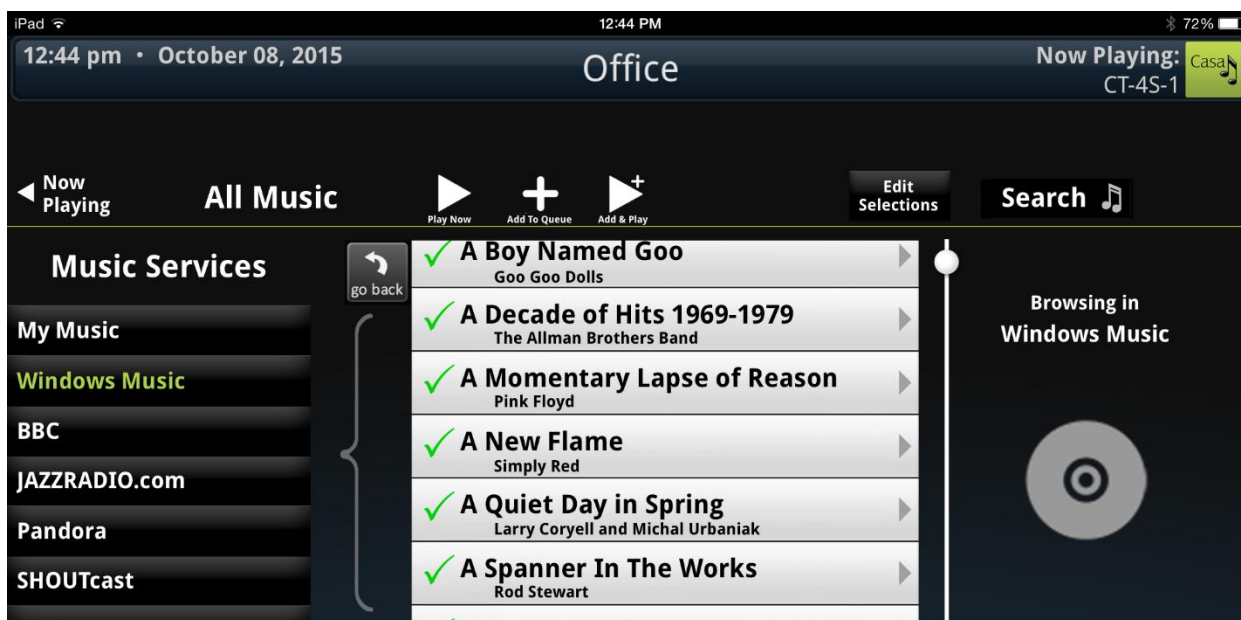
Call 888.855.2272 or email [Support@CasaTunes.com](mailto:Support@CasaTunes.com)

Copyright CasaTools, LLC 2015, 2016  
V2.02

After clicking on a music service, in this case Windows Media, you will see something like this.



In the above example, since we have many albums of music stored in Windows Media format, you can see that Albums is checked. This means that you can click on the Play Now button and all of the music on those albums will be loaded into the queue and start playing. On the other hand, if we click on Albums, we can see a list of the albums that we have stored.



At this point, we could click on "Play Now", and just like before, all songs will be added to the queue. If we don't click on "Play Now", and click on the "Change Selections" button (shown as "Edit Selections", but this is the same), we can un-check albums and only add some of them to the queue. For example, in the



## User Guide for URC Streaming Module

following image, you will see two albums checked. This was done by clicking on “Deselect All” (the empty box on the top line) and then clicking inside the checkboxes next to the two albums we want to listen to. Now click on Play Now to start them playing.



After clicking on Play Now, the UI automatically switches back to the Now Playing screen.

In a similar way, if you wish to search for a favorite artist, song or album, just click on the Search button and type in the search item. The results will come up like when browsing for music.

Need Help? Have Feedback?

Please do not hesitate to contact us.

Call 888.855.2272 or email [Support@CasaTunes.com](mailto:Support@CasaTunes.com)

Copyright CasaTools, LLC 2015, 2016  
V2.02

## Now Playing Screen

The now playing screen displays the currently playing Queue, the song title, album name, and other information about what is playing. For disc based music it also shows you what song will be played next. If you wish to play a different song from the queue, just click on it and it will start playing, or use the Next and Previous buttons. The Repeat button tells CasaTunes to continuously play the music forever, one more time or just this time. The Shuffle button mixes the music up in a random order.



## Search Music

You can search for music by clicking on Search Music and entering the song title, artist or album in the pop-up touch keyboard. You will end up on a screen similar to the Select Music (browsing) screen. Searches will show results from the currently playing service. You can see by clicking on Search All Music Services to see expanded Browse Services takes you to the browsing screen.



Need Help? Have Feedback?

Please do not hesitate to contact us.

Call 888.855.2272 or email [Support@CasaTunes.com](mailto:Support@CasaTunes.com)

## Editing Playing Queue

If you click on the “Other Commands” button, which is the three horizontal dots (⋮), you can edit the queue or completely clear it (not usually necessary, since using “Play Now” in the Select Music and Search Music pages replaces the queue). Don’t worry, removing items from the Queue does not remove them from storage. Here is an image where the “Edit Queue” button in the Other Commands list was pressed. Two songs in the queue were checked. As soon as the “Remove Q Items” button is checked, the two songs are removed from the queue and it goes back to the normal mode:



Need Help? Have Feedback?

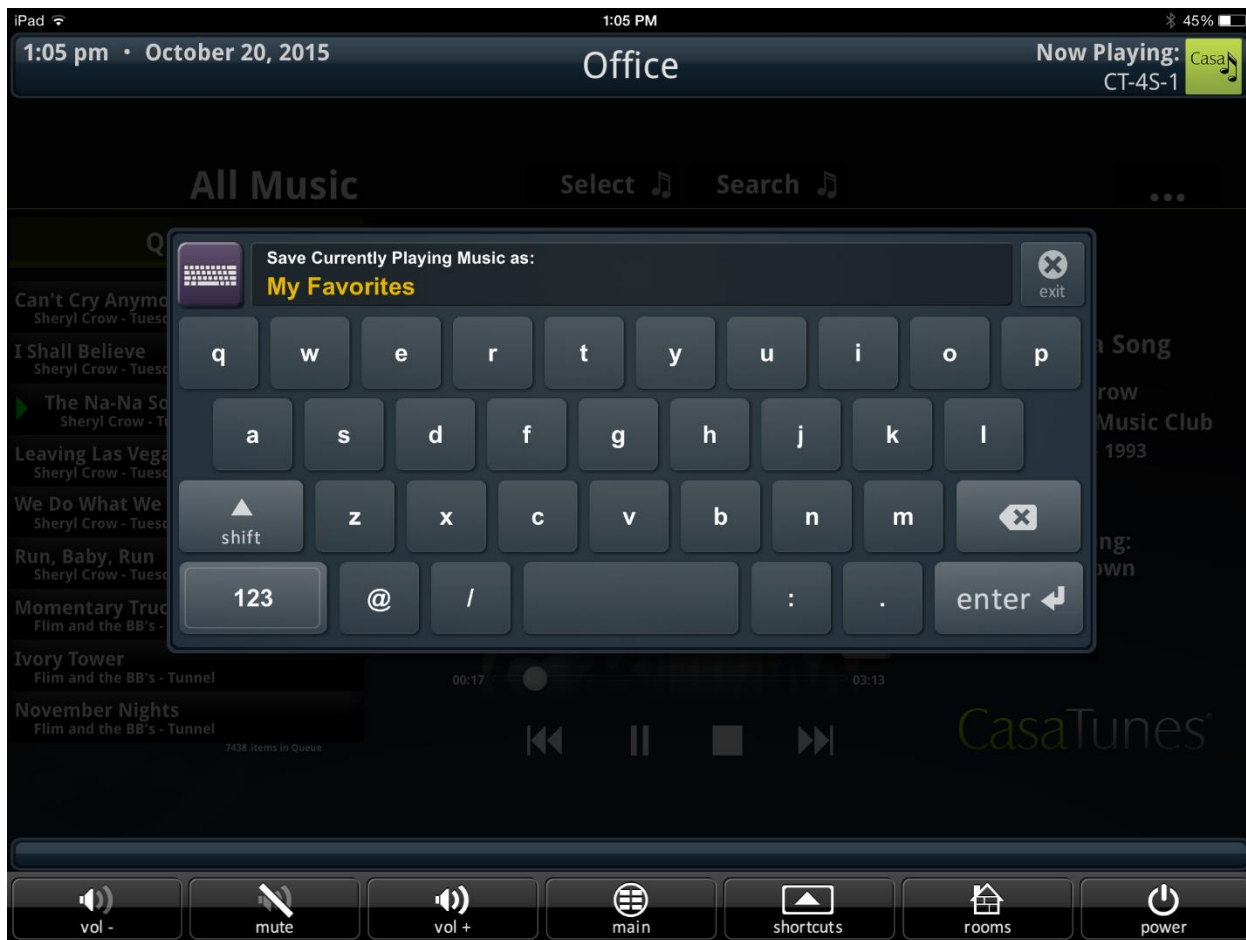
Please do not hesitate to contact us.

Call 888.855.2272 or email [Support@CasaTunes.com](mailto:Support@CasaTunes.com)

Copyright CasaTools, LLC 2015, 2016  
V2.02

## Creating a CasaTunes Playlist

If you click on Save Queue, shown in the previous image, you can save the current queue as a CasaTunes Playlist, making it easier to play a selection of your favorite songs, or a favorite station or other Music Service selection.



Use the touch keyboard to name the CasaTunes Playlist and then the next time you want to listen to the same selections, use the Select Music button to browse CasaTunes Playlists to make your choice.

Need Help? Have Feedback?

Please do not hesitate to contact us.

Call 888.855.2272 or email [Support@CasaTunes.com](mailto:Support@CasaTunes.com)

Copyright CasaTools, LLC 2015, 2016  
V2.02