

# Using a Dedicated Dante Network with a CasaTunes Dante Music Server

## Overview

This guide explains how to configure a CasaTunes Dante Music Server when using **separate networks** for:

- **Control / Internet traffic**
- **Dante audio (dedicated VLAN or physical network)**

This approach is often used in professional AV installations to ensure:

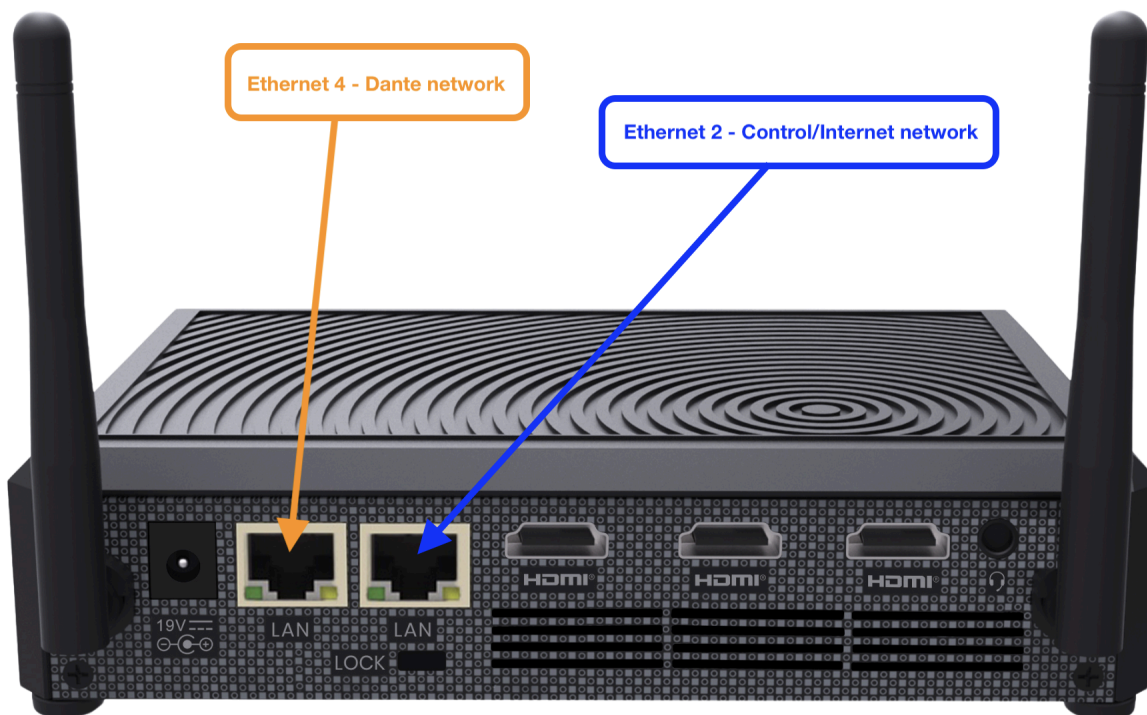
- Reliable, low-latency audio performance
- Network stability under load
- Simplified troubleshooting and scalability

## System Architecture

CasaTunes Dante music servers include **two network interfaces (NICs)**:

- **Ethernet 2 (Control / Internet Network)**  
Located closest to the HDMI ports
- **Ethernet 4 (Dante Network)**  
Located furthest from the HDMI ports

## Rear Panel Reference



**Port Identification:**

- **Ethernet 2** → Control / Internet Network
- **Ethernet 4** → Dante Network (Primary Audio Interface)

## Step 1: Physical Network Connections

1. Connect:
  - **Ethernet 2** → Control / Internet Network
  - **Ethernet 4** → Dante Network (VLAN or dedicated switch)

2. Verify:

- Dante network is properly configured with **DHCP**
- All Dante devices are connected to the same VLAN/subnet

## Step 2: Configure Dante Controller Interface

1. Open **Dante Controller**

2. Navigate to:

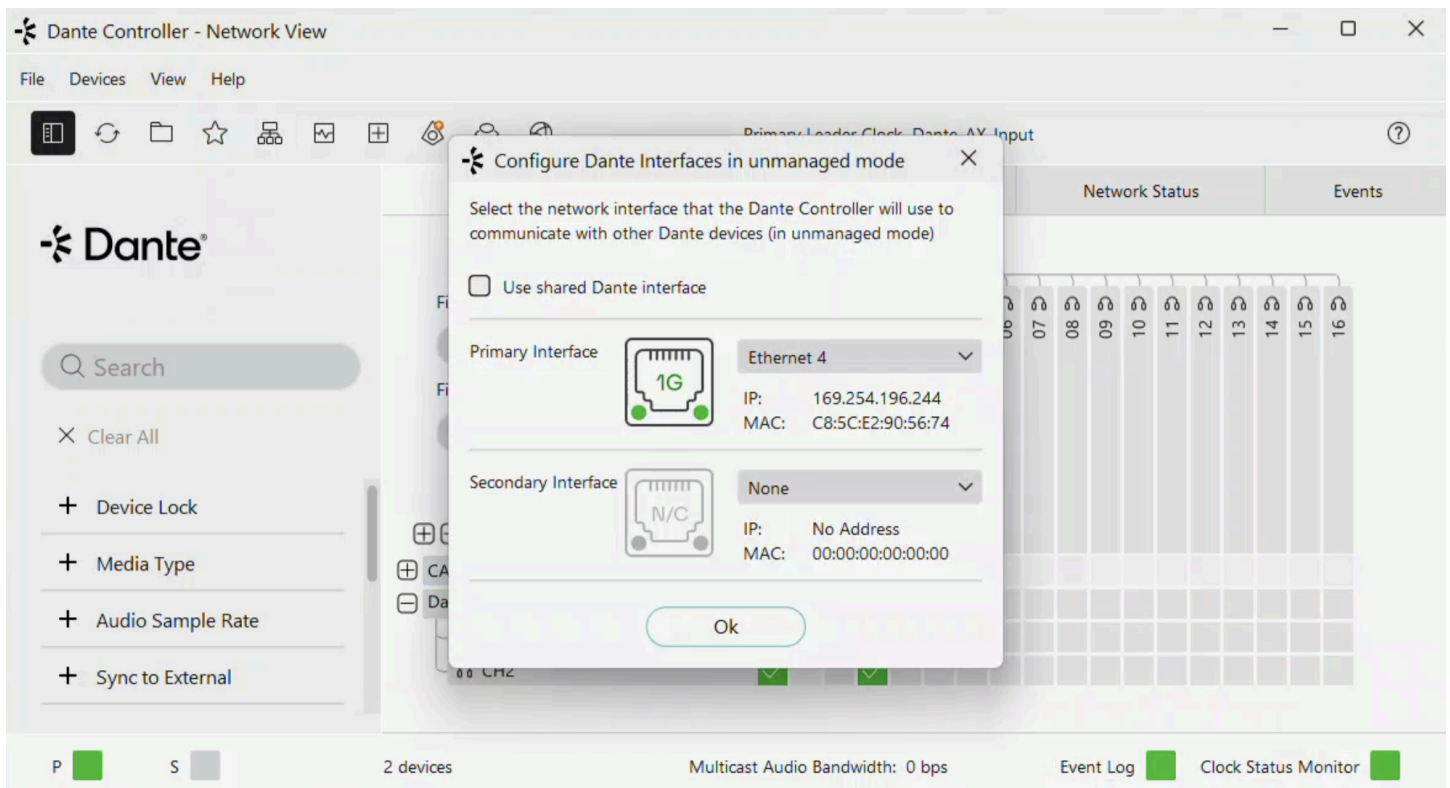
**File** → **Interfaces**

3. Uncheck:

- **Use Shared Dante Interface**

4. Set:

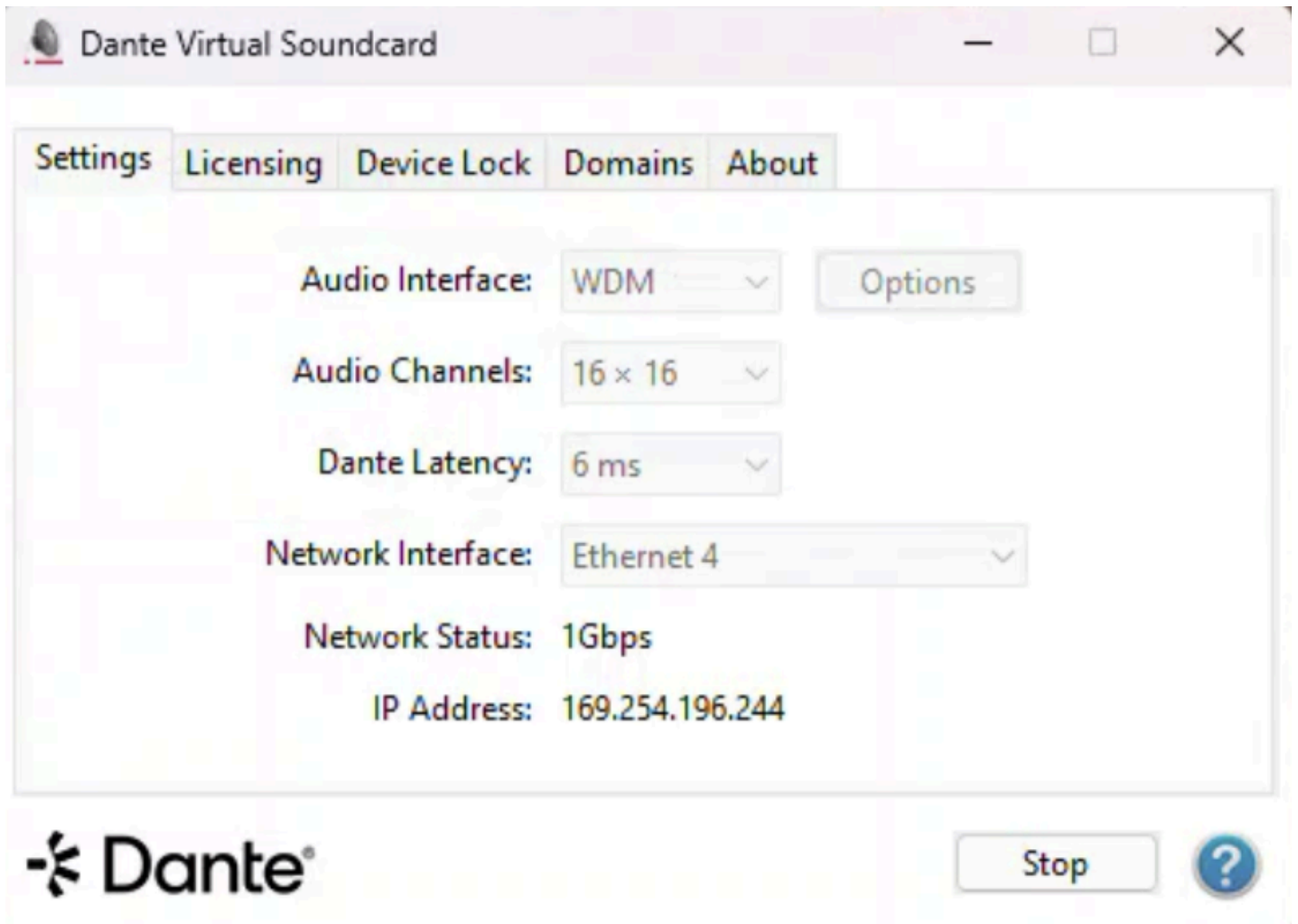
- **Primary Interface = Ethernet 4**



**Note:**

This ensures Dante Controller communicates on the dedicated Dante network.

## Step 3: Configure Dante Virtual Soundcard (DVS)



1. Open **Dante Virtual Soundcard**
2. Click **Stop**
3. Select the **Settings** tab
4. Configure:
  - o **Network Interface = Ethernet 4**
  - o **Audio Channels = 16 x 16**
  - o **Dante Latency = 6 ms (recommended starting point)**
5. Confirm:
  - o Network Status = **1 Gbps**
  - o IP address is within the **Dante VLAN subnet**
6. Click **Start**

## Step 4: Verify Network Configuration

Before proceeding, confirm:

- Dante Controller is using **Ethernet 4**
- Dante Virtual Soundcard is using **Ethernet 4**
- All Dante devices are on the **same VLAN/subnet**
- Devices are visible in Dante Controller with no warnings

## Step 5: Restart the Music Server (Recommended)

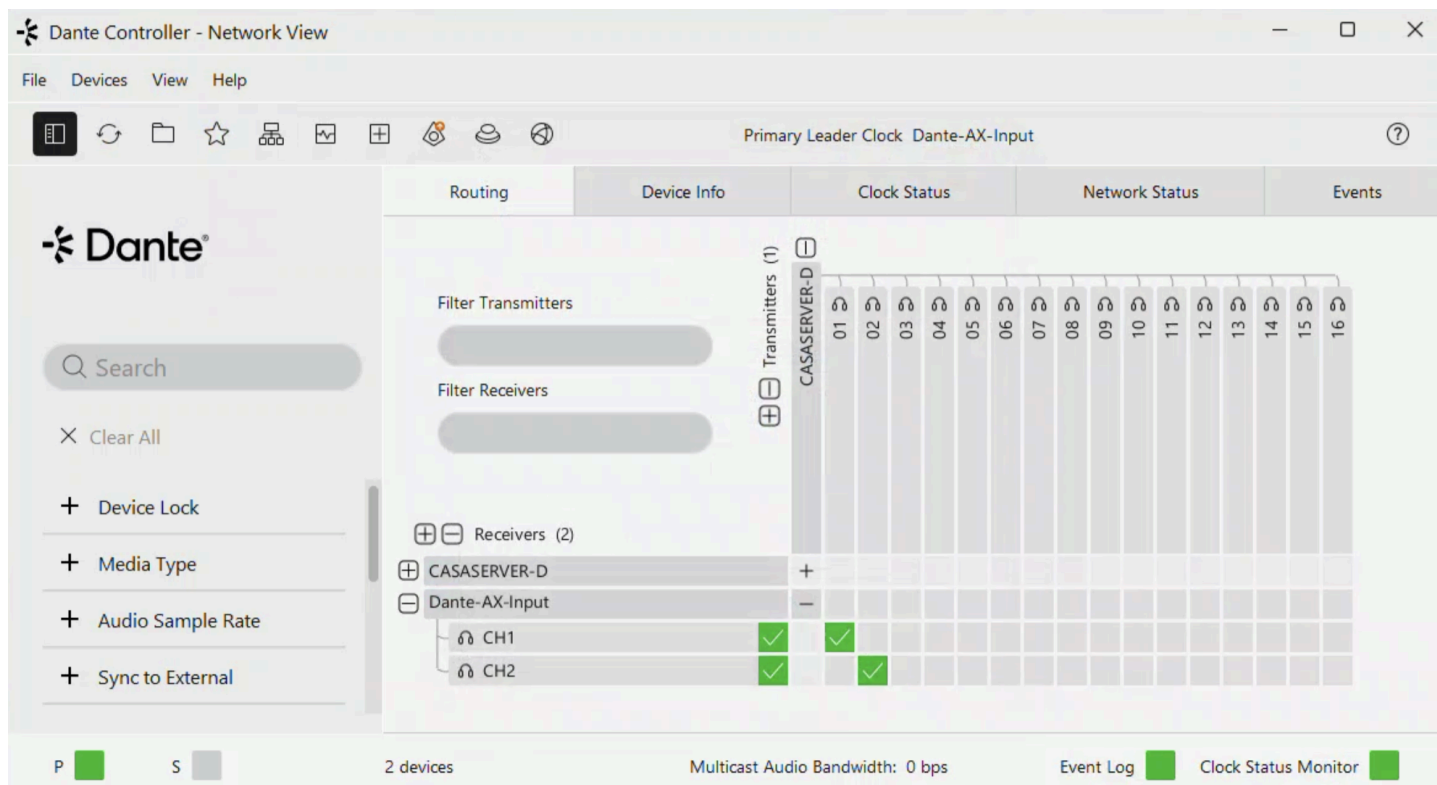
A reboot ensures all services initialize correctly.

Open CasaTunesX:

<http://localhost/casatunesx>

- 1.
2. Navigate to:
  - **MENU** → **Help** → **Reboot Music Server**
3. Click **Reboot** and confirm

## Step 6: Configure Dante Audio Routing



1. Open **Dante Controller**
2. Select the **Routing** tab

### Understanding the Routing Matrix

- **Columns (top)** = Transmitters (CasaTunes outputs)
- **Rows (left)** = Receivers (amplifiers, DSPs, etc.)
- **Crosspoints** = Connections

### CasaTunes Channel Mapping

CasaTunes outputs are grouped as stereo pairs:

- **Channels 01–02** → **Player 1**
- **Channels 03–04** → **Player 2**
- **Channels 05–06** → **Player 3**
- etc.

Each pair represents a **single stereo audio stream**.

## Creating Connections

1. Expand:
  - CasaTunes transmitter device
  - Target receiver device
2. Click the intersection between:
  - Desired transmitter channel
  - Desired receiver channel
3. Confirm:
  - A **green checkmark** appears (active subscription)

## Best Practices

- Always route **stereo pairs together**
- Maintain consistent channel-to-room mapping across projects
- Use clearly labeled device names in Dante Controller
- Keep Dante network isolated via VLAN or dedicated switch
- Use managed switches with gigabit (or higher) capability

## Troubleshooting

### No devices visible:

- Verify Dante Controller is set to Ethernet 4
- Confirm VLAN configuration and DHCP

### Audio not passing:

- Verify Dante Virtual Soundcard is using Ethernet 4
- Check routing crosspoints (green checkmarks)

### Subscription errors:

- Check sample rate consistency
- Verify clock sync in Dante Controller

## Final Validation Checklist

Before completing installation:

- Dante Controller sees all devices
- No subnet or network warnings
- Audio routes successfully without dropouts
- Dante Virtual Soundcard bound to Ethernet 4
- Control network operates independently
- Streams map correctly to zones

## Need Help?

For additional support, contact CasaTunes technical support or refer to product documentation.